

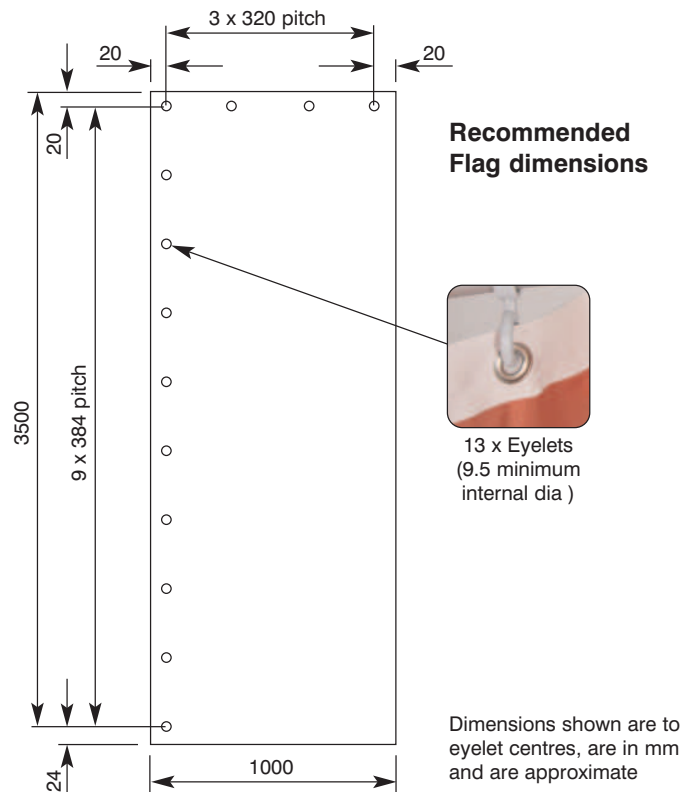
Wind Dancer 5m

5m high portable flag ideal for indoor or outdoor events, promotions or exhibitions.



features & benefits

- Max Flag size 3500mm x 1000mm approx
- Overall height 5300mm max approx
- Portable and lightweight
- Unique design allows the flag to rotate when the wind direction changes
- Telescopic pole allows the flag to be set at three fixed heights
- Water filled base aids stability which splits down into four sections for easy carriage
- Quick to assemble and easy to use
- Optional carry bags available



hardware specifications

Overall assembled dimensions (h) x (w) x (d):
 Maximum height
 5300mm x 1000mm x 1000mm approx
 Intermediate height
 4170mm x 1000mm x 1000mm approx
 Minimum height
 2900mm x 1000mm x 1000mm approx
 Weight: 10kg approx empty and 76kg approx
 when filled with water
 Capacity of base: 66 litres of water approx
 (16.5 litres per base quadrant)

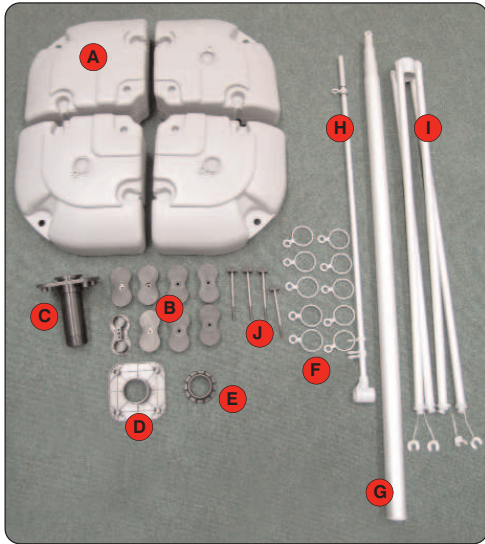
graphic specifications

Recommended substrate:
 Lightweight flag textile
Do not use banner vinyl
 Recommended print process:
 Dye-sublimation print onto one
 side of the flag only
 Maximum flag size:
 3500mm (h) x 1000mm (w)
 Intermediate flag size:
 2500mm (h) x 1000mm (w)
 Minimum flag size:
 1500mm (h) x 1000mm (w)

additional information

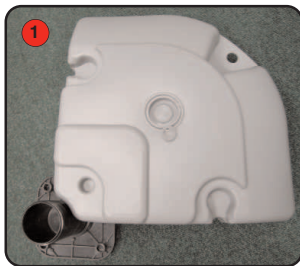
Wind Dancer 5m flags are designed
 to withstand approximate windspeeds
 of 13 to 18 miles per hour
 (Beaufort Scale 4)
 Recommended Carry bags:
 UB716-C

Assembly Instructions

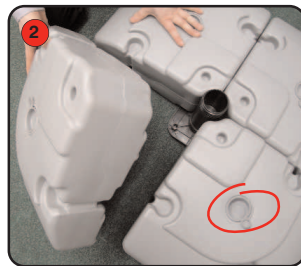


Kit includes:

- 4 x base quadrants (A),
- 8 x base connectors (B),
- 1 x base stand (C),
- 1 x base stand top (D),
- 1 x base stand connector (E),
- 10 x large rings and 4 x small rings (F),
(small rings are attached to top pole)
- 1 x telescopic pole (G),
- 1 x top pole (H),
- 1 x pole stay set (I),
- 4 x base screws (J)
- 1 x pole clamp (not shown)



1 Turn the base stand upside down and slot in the 1st base quadrant.



2 Repeat step 1 with the remaining 3 quadrants. Ensure the quadrant plugs are on the upper side.



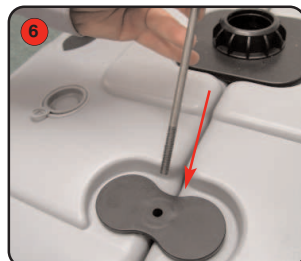
3 Take the base stand top and slot into the four indents on base quadrant.



4 Secure the base stand connector onto the base stand thread.



5 Place a base connector (without thread) into the indent of two of the quadrants



6 Insert a base screw through the connector hole so that it appears underneath.



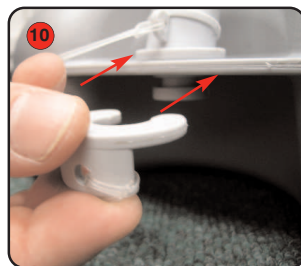
7 Take a base connector (with thread) and place over the end of the screw underneath the base.



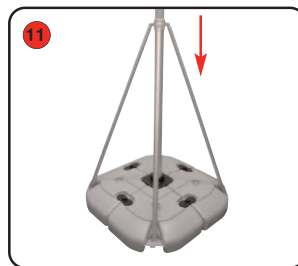
8 Turn the base screw to fasten both quadrants together. Repeat steps 5 to 8 for the remaining base connectors.



9 Attach the pole stay set to the base quadrants, placing each stay through the corresponding hole on the base.



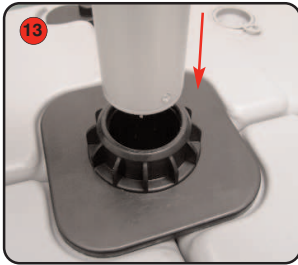
10 Secure the stays to the base by slotting the locking pin over the stay.



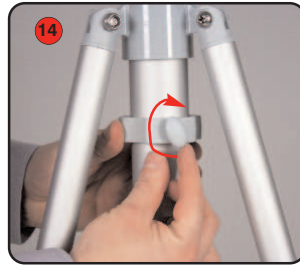
11 Slide the telescopic pole through the hole in the pole stay set.



12 Slide the pole clamp over the telescopic pole.



Seat the telescopic pole into the base stand.



Position the pole clamp near to the top of the stay feet and tighten the thumbwheel to secure.



Fill each base quadrant with water or sand to provide stability to the flag.



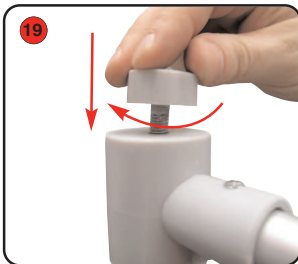
Attach 9 large rings to the eyelets on the longer side of the flag and 4 small rings to the shorter side.



Slide the small rings onto the top pole, ensure the rubber rings secure the end ring in place.



Place the larger rings over the telescopic pole.

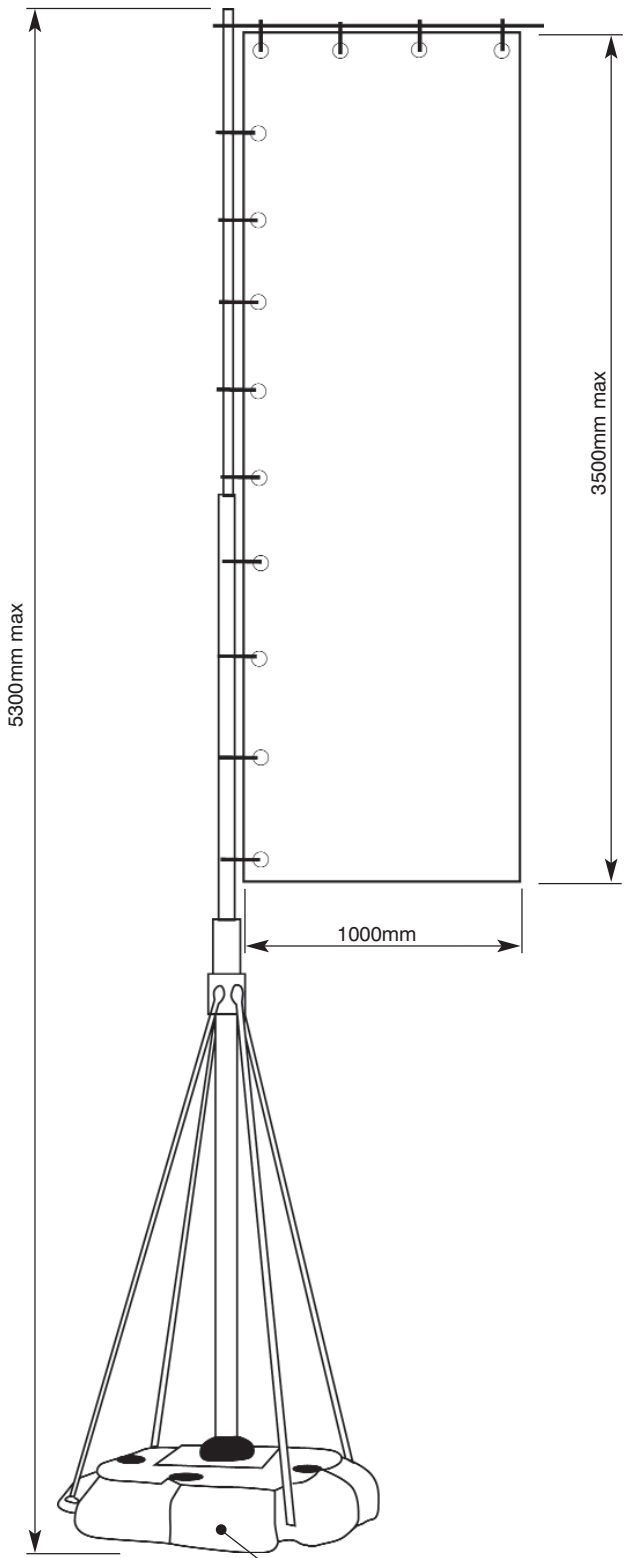


Attach the top pole to the telescopic pole and tighten screw to secure.



Extend the telescopic poles to the desired flag height, ensure that each button locator clicks into position.





Base dimensions:
200 (h) x 1000 (w) x 1000 (d)

All dimensions shown are approx.